

TOSHIBA

TV RANGE



Bringing TV to Life

2025

toshiba-tv.com

Hello Toshiba TV

Bringing more colour, passion and power to home entertainment, Toshiba TV is spearheading the future of TV through aspirational design and trend-setting innovation.

Founded in 1875, the brand is building on years of technical expertise, having already achieved international acclaim with the release of numerous world-first and Japanese-first products and services, including the launch of the first ever colour TV in 1960.

With such a strong technological heritage, Toshiba TV is now set to enthrall the next generation of viewers, powering the imagination and unlocking emotion using cutting-edge visual and audio technologies.



Technology

OLED TV	4
QLED TV	5
Sound Quality	6
High Dynamic Range	7
TRU Picture Engine	8
Vidaa TV	9
Google TV	10
Fire TV	11
Voice Assistants	12

Product Range 13

Vidaa TV Series 14

XV9G Series: OLED UHD VIDAA TV	15
QV7G Series: OLED UHD VIDAA TV	16
QV4G Series: OLED UHD VIDAA TV	17
UV6F Series: UHD VIDAA TV	18
UV4F Series: UHD VIDAA TV	19
QV3F Series: QLED UHD VIDAA TV	20
QV2F Series: QLED UHD VIDAA TV	21
UV3F Series: UHD VIDAA TV	22
UV2F Series: UHD VIDAA TV	23
QV34 Series: QLED UHD VIDAA TV	24
QV24 Series: QLED UHD VIDAA TV	25
UV34 Series: UHD VIDAA TV	26
UV24 Series: UHD VIDAA TV	27
QV23 Series: QLED UHD VIDAA TV	28
UV23 - UV33 Series: UHD VIDAA TV	29
QV15 Series: QLED UHD VIDAA TV	30
UV15 Series: DLED UHD VIDAA TV	31
W/LV2F – W/LV3F Series : HD/Full HD - VIDAA TV	32
W/LV25- W/LV35 Series: HD/Full HD - VIDAA TV	33

Fire TV Series 34

XF9F Series: OLED Fire TV	35
UF4F Series: UHD Fire TV	36
W/L2F- W/LF3F Series: HD/Full HD - Fire TV	37

Android TV / Google TV Series 38

MG8F Series: MINILED UHD GOOGLE TV	39
QA2 - QA3 Series: QLED UHD Android TV	40
UA23 - UA3E Series: Slim Bezel Android TV	41
W/LA2 - W/LA3 Series: Full HD Android TV	42

Experience the perfect reproduction of depth, color, and pure blacks with Toshiba OLED TV. This cutting-edge technology delivers cinematic picture quality and superb motion-handling. Enjoy ultra-responsive 4K gaming with Game Mode, and immerse yourself in the immersive audio performance straight out of the box. Elevate your entertainment experience with Toshiba OLED TV.



QLED TV represents a groundbreaking advancement in LED-backlit LCD technology, capable of producing billions of colors with remarkable precision. It adheres to the stringent standards set by DCI-P3, ensuring up to 95% color coverage within this industry-recognized color space. Unlike conventional LED TVs, QLED TVs employ a unique approach by utilizing blue LED light to generate blue hues, while the red and green light is achieved through the utilization of QLEDs. This seamless fusion of technologies allows for the attainment of exceptionally accurate and desired color representation, resulting in a truly remarkable visual experience.



Dolby Atmos

Elevate your entertainment with Dolby. Experience the immersive sound of Dolby Atmos® and go deeper into the story. It's easier than ever to take your entertainment to the next level with Dolby Atmos. Whatever kind of entertainment you love, it's better in Dolby and you won't want to experience it any other way.



Go inside the sound. Hear movies, games and more, like never before. DTS:X puts you into the center of a larger-than-life audio experience everywhere you listen, watch and play. When you're immersed in sound, explosions are bigger. Emotions grow deeper. Thrills multiply. Elevate your senses with DTS:X.



POWERED BY
ONKYO

To bring you a higher standard of TV sound quality, we have collaborated on the design of our speakers and subwoofers with leading hi-fi and home cinema brand, Onkyo. Enjoy a more uniform audio performance and make every seat in the room the "sweet spot".

HDR brings breathtaking colour, spectacular on-screen contrasts and life-like picture clarity to your viewing experience.

Dolby Vision

Enjoy your favorite entertainment in Dolby. Dolby Vision is now available on a wide range of devices. Take your entertainment to new heights when you stream your favorite shows and the best movies in Dolby.



More Ways to Access High Quality HDR Content



With HLG compatible TVs, you will be able to watch free HDR over-the-air broadcasts and IP streaming.



Bringing you more ways to access HDR content, our TVs support the standard HDR video format, HDR10.

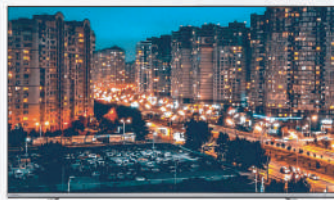
T R U PICTURE ENGINE

TRU Picture Technology provides smooth, upscaled and more detailed viewing whatever you're watching.



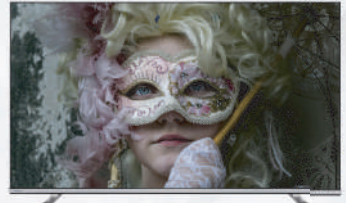

T R U
 F L O W

Predicts the frame in between the frames to create smoother viewing in fast-paced scenes. Perfect for sport and movies.




T R U
 MICRO DIMMING

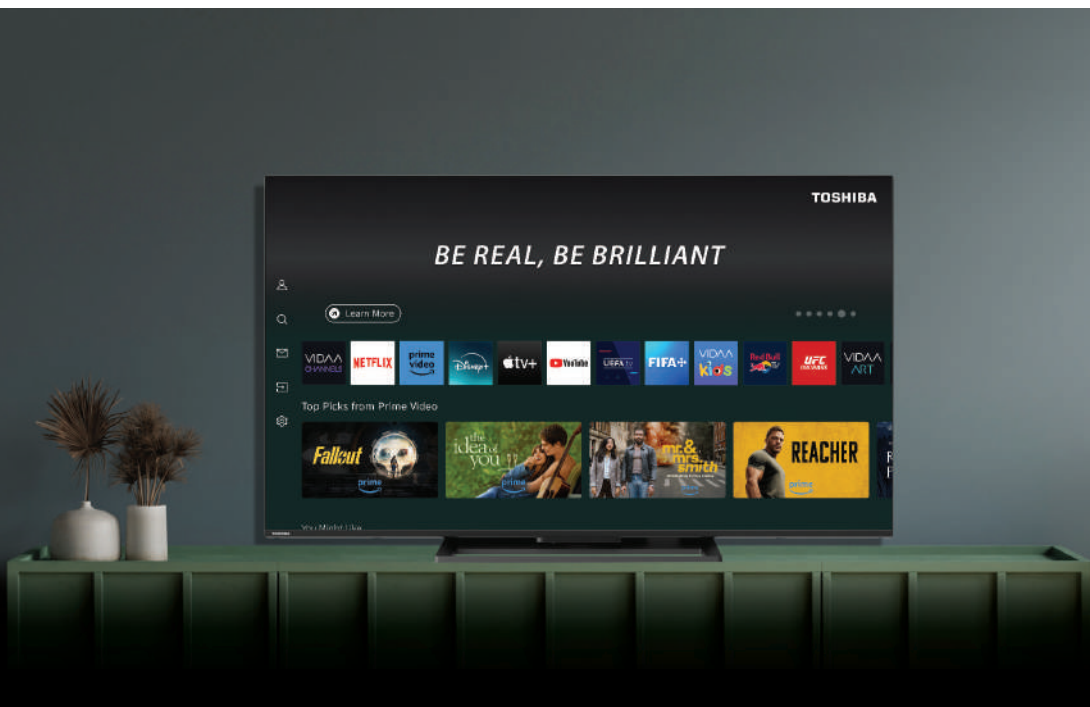
Enhances the contrast of an image by optimizing the darker and brighter regions to create a more realistic image.




T R U
 RESOLUTION

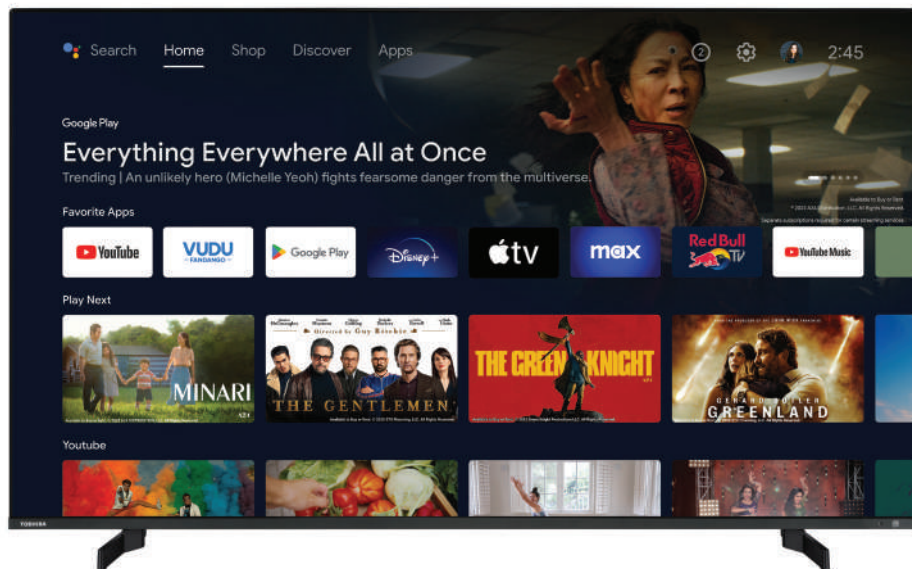
Automatically up-scales incoming signal so you can experience your favorite movies and TV shows in the highest resolution.

Toshiba TV and VIDAA Team Up for New Smart TV Line



We are excited to be partnering with VIDAA International to bring the latest technology and features to our customers.

Our new line of smart TVs powered by VIDAA OS will offer a simple, yet powerful, user experience that will provide access to a wide range of streaming apps and services.



Google TV is a smart TV platform developed by Google. It's designed to provide users with an intuitive and streamlined way to access a wide range of content, including streaming services, live TV, and more. Google TV combines features from Android TV and Chromecast, offering a unified interface for discovering and enjoying entertainment. Key features include personalized content recommendations, voice search, and integration with Google Assistant. Overall, Google TV aims to enhance the viewing experience by making it easier and more convenient to find and enjoy your favorite shows and movies.



Google Play
Movies & TV



Google Play
Games



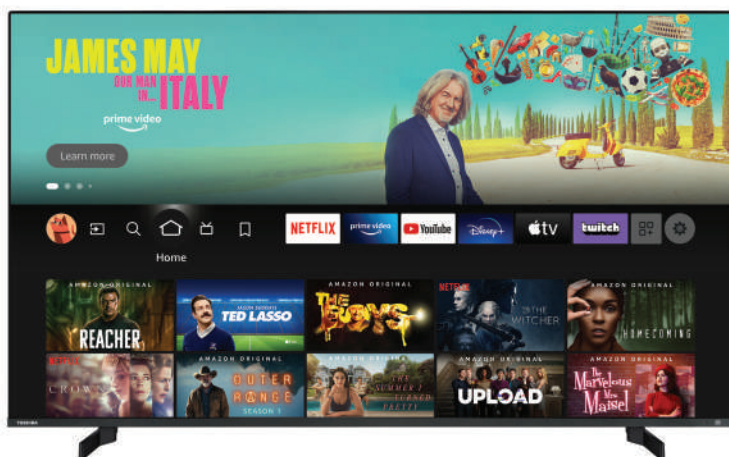
Chromecast
built-in



YouTube

Find content fast

Fire TV is simple and intuitive. It all starts with the easy-to-use Fire TV Home screen. Search across multiple streaming services, including channels and apps, to find what you want to watch.





Vidaa Voice, an essential component of the immersive Vidaa operating system for TVs, revolutionizes the way you interact with your entertainment hub. Seamlessly integrated into Vidaa OS TVs, this cutting-edge voice assistant empowers you to effortlessly control your viewing experience with simple vocal commands. From navigating menus to searching for your favorite content and adjusting settings, Vidaa Voice brings unparalleled convenience right to your fingertips—or rather, to your voice. Experience the future of TV interaction with Vidaa Voice, where effortless control meets boundless entertainment possibilities.



Consumers can control their Toshiba Smart TVs with their Google Assistant built-in devices. Users in Google Home available countries with the Toshiba TVs supporting works with OK Google feature are able to control their Toshiba Smart TVs with their voice in their own languages.



Toshiba TVs are able to work with Alexa. Users can control their Toshiba TVs through Amazon Echo devices by just adding the TV to Smart Home device list. Already being sold in United Kingdom and Germany, customers can differentiate these TVs with their works with Alexa badges.



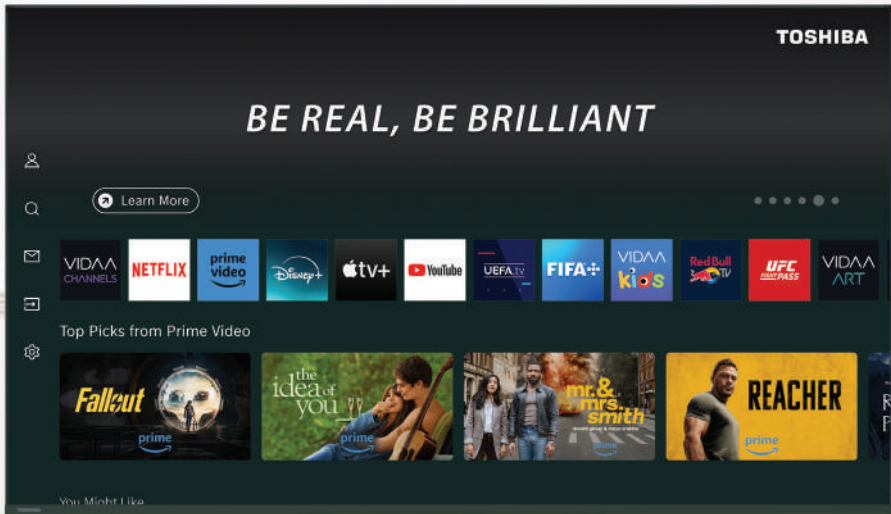
Consumers are able to use Alexa to control their Toshiba Smart TVs through far-field microphones attached to their TVs – all without a need for an additional Echo device! Alexa will be able to help customers perform functions like turning the TV on and off, increasing or decreasing the volume, and changing the channels etc.



Toshiba TVs are able to work with Alexa. Users can control their Toshiba TVs through Amazon Echo devices by just adding the TV to Smart Home device list.

Product Range





XV9G Series: OLED UHD VIDAA TV



Step into a world of cinematic brilliance with the Toshiba OLED UHD TV powered by VIDAA OS. Featuring self-illuminating OLED pixels, this TV delivers perfect blacks, infinite contrast, and vibrant color for a picture that's as close to reality as it gets. Enjoy ultra-smooth motion with 100Hz panel support—perfect for fast-paced action scenes, live sports, and next-gen gaming. Every detail stays sharp and fluid, no matter how intense the moment gets.

Designed with a premium metal center stand, it brings a sleek and modern look to your living space, while ensuring stability and style. Whether you're streaming the latest series or watching live broadcasts, the intuitive VIDAA OS offers seamless access to all your favorite content. Elevate your home entertainment experience with the stunning design and superior performance of the XV9G Series.



QV7G Series: OLED UHD VIDAA TV



advanced QLED technology, this TV delivers a wide color gamut and enhanced brightness—bringing every scene to life with vibrant intensity and crystal-clear clarity. With 100Hz panel support and Variable Refresh Rate (VRR), fast-paced content stays smooth and sharp, whether you're watching live sports or diving into intense gaming sessions. Say goodbye to motion blur and screen tearing—this TV keeps up with every move. Designed for gamers, built for speed. Enjoy ultra-responsive gameplay with reduced input lag and silky-smooth motion, giving you the competitive edge in every match. Its refined design is matched by a sleek metal center stand, adding a touch of elegance to any living space. The VIDAA OS ensures quick, intuitive access to your favorite streaming services, apps, and live broadcasts.

Toshiba QV7G Series: Where cinematic quality meets next-level gaming performance.

VIDAA

VIDAA VOICE

Dolby Vision Atmos

TRU RESOLUTION

TRU FLOW

QLED

HDR 10

VRR

Bluetooth

works with Google Home

works with alexa

100 Hz REFRESH RATE

DTS X

YouTube

prime video

NETFLIX

Disney+

QV4G Series: OLED UHD VIDAA TV



Step into a world of immersive visuals and sophisticated design with the Toshiba QLED UHD TV.

Powered by QLED technology, it delivers a wider color spectrum, enhanced contrast, and lifelike brightness—perfect for both everyday viewing and cinematic experiences.

The ultra-slim QLED construction combined with a borderless design maximizes your screen real estate, drawing you deeper into the content without distractions. From edge to edge, it's made to impress.

With its sleek metal side stands, this TV offers a contemporary look that complements modern interiors—combining function, form, and flair. The intuitive VIDAA OS provides seamless access to streaming platforms, apps, and live content, making entertainment effortless.

Toshiba QV4G Series: A perfect fusion of cutting-edge visuals and minimalist design.

VIDAA

VIDAA VOICE

Dolby Vision Atmos

T R U
RESOLUTION

T R U
F L O W

QLED

H D R 1 0

DTS X

Bluetooth

works with
Google Home

works with
alexa

YouTube

prime video

NETFLIX

Disney+



Introducing the new Toshiba UV6F series, a stunning slim borderless UHD TV designed to enhance your viewing experience. Equipped with the intuitive VIDAA OS, this series combines sleek aesthetics with cutting-edge technology. The metal mid stand adds a touch of elegance, making the UV6F series a perfect centerpiece for any modern living space.

Experience the ultimate gaming performance with the Toshiba UV6F series, featuring an advanced Game Control Board. This dedicated interface optimizes your gaming setup, offering seamless access to key settings and real-time performance metrics. Enjoy low input lag and enhanced responsiveness, ensuring every move and command is executed with precision. The UV6F series is designed for gamers who demand the best in visual clarity and control.





Introducing the new Toshiba UV4F series, a sleek and sophisticated slim borderless UHD TV designed for an exceptional viewing experience. Featuring the intuitive VIDAA OS, this series seamlessly blends technology with style. The metal side stand provides a modern touch, making the UV6G series an elegant addition to any living room.

For gaming enthusiasts, the UV4F series includes an advanced Game Control Board, optimizing your gaming experience with quick access to key settings and real-time performance metrics. Enjoy low input lag and enhanced responsiveness, ensuring that every move is executed flawlessly. The UV6G series is the perfect choice for those seeking superior visual clarity and control.





Introducing the Toshiba QV3F series, a cutting-edge QLED TV designed to elevate your entertainment experience. Featuring the advanced VIDAA OS, the QV3F series delivers seamless navigation and access to a wide range of content.

Enjoy stunning visual highlights with QLED technology, offering vibrant colors and deeper contrasts. The QV3F series also supports HDR10+, ensuring every scene is displayed with exceptional clarity and dynamic range. Whether you're watching movies or gaming, the QV3F series brings every detail to life with breathtaking realism.

VIDAA

Dolby Vision Atmos

DTS X

TRU
RESOLUTION

TRU
FLOW

HDR10

QLED

Bluetooth

works with
Google Home

works with
alexa

YouTube

prime video

NETFLIX

Disney+



Introducing the Toshiba QV2F series, a state-of-the-art QLED TV designed to enhance your entertainment experience. Featuring the advanced VIDAA OS, the QV2F series offers smooth navigation and easy access to a variety of content.

With QLED technology, the QV2F series delivers vibrant colors and deep contrasts, bringing every image to life. The series also supports HDR10+, ensuring exceptional clarity and dynamic range in every scene. The sleek metal side stand adds a modern touch, making the QV2F series a stylish addition to any room. Whether for movies or gaming, the QV2F series provides breathtaking realism and detail.





Introducing the Toshiba UV3F series, an innovative UHD TV designed to redefine your viewing experience. With the user-friendly VIDAA OS, the UV3F series offers seamless navigation and access to a wide range of content.

Featuring Tru Flow technology, the UV3F series delivers smooth and fluid motion, perfect for fast-paced action scenes and sports. The practical plastic mid stand provides stability and a modern look, making the UV3F series a versatile addition to any room. Its borderless design enhances the immersive viewing experience, bringing you closer to the action on screen. Whether you're watching movies or gaming, the UV3F series ensures exceptional detail and dynamic visual.

VIDAA

Dolby Vision · Atmos

dtshd



T R U
RESOLUTION



T R U
F L O W



H D R 1 0



Bluetooth®



works with
Google Home



works with
alexa



YouTube

prime video

NETFLIX





Introducing the Toshiba UV2F series, an advanced UHD TV designed to revolutionize your entertainment experience. With the user-friendly VIDAA OS, the UV2F series provides effortless navigation and access to a wide array of content.

With Tru Flow technology, the UV2F series ensures seamless and fluid motion, ideal for high-action scenes and sports. Supporting HDR10+, each scene is presented with outstanding clarity and dynamic range. The sturdy plastic mid stand offers stability and a modern aesthetic, making the UV2F series a versatile fit for any space. Whether enjoying movies or gaming, the UV2F series offers remarkable detail without compromising smoothness.

VIDAA

Dolby Vision · Atmos

DTS X

TRU RESOLUTION

TRU FLOW

HDR10

VRR

Bluetooth®

works with Google Home

works with alexa

YouTube

prime video

NETFLIX

Disney+



Introducing the Toshiba QV34 series, featuring QLED technology and the intuitive VIDAA OS, designed to elevate your viewing experience. The QV34 series combines stunning picture quality with seamless navigation, offering a wide range of content at your fingertips.

With a practical plastic mid stand and a borderless design, the QV34 series not only provides stability but also enhances the immersive viewing experience. Enjoy vibrant colors, deep contrasts, and exceptional clarity with QLED technology. Additionally, access a variety of content easily with VIDAA OS, ensuring there's always something exciting to watch

VIDAA

Dolby Vision Atmos

dts X

T R U
RESOLUTION

H D R 1 0

QLED

Bluetooth®

works with alexa

YouTube

prime video

NETFLIX

Disney+



Introducing the Toshiba QV24 series, featuring advanced QLED technology and the intuitive VIDAA OS, designed to redefine your viewing experience. The QV24 series combines stunning picture quality with seamless navigation, offering a wide range of content at your fingertips.

With a sleek borderless design and a durable metal side stand, the QV24 series not only provides stability but also enhances the modern look of your living space. Enjoy vibrant colors, deep contrasts, and exceptional clarity with QLED technology. Additionally, the QV24 series is equipped with VIDAA Voice, allowing you to control your TV and search for content using simple voice commands.





Introducing the Toshiba UV34 series, a remarkable UHD TV designed to transform your home entertainment. With the user-friendly VIDAA OS, the UV34 series offers seamless navigation and access to a wide range of content. Featuring a practical plastic mid stand and a borderless design, the UV34 series provides stability while enhancing the immersive viewing experience. Enjoy stunning visuals with UHD resolution, bringing every detail to life. Additionally, the UV34 series offers VOD support for popular services like Netflix, Prime Video, and Disney+, ensuring you have access to a vast library of content.





Introducing the Toshiba UV24 series, a cutting-edge UHD TV designed to elevate your home entertainment. With the user-friendly VIDAA OS, the UV24 series offers smooth navigation and access to a wide array of content.

With its sleek borderless design and sturdy metal side stand, the UV24 series combines stability with modern elegance, enhancing any living space. Enjoy stunning visuals in UHD resolution and vibrant colors, further enhanced by Dolby Vision support, which brings every scene to life with remarkable detail and clarity. Whether you're watching movies or gaming, the UV24 series delivers an immersive viewing experience that is truly exceptional.



QV23 Series: QLED UHD VIDAA TV



Enjoy a seamless integration of our user-friendly VIDAA UI with QLED's cutting-edge picture technology. From the moment you turn on your TV, be captivated by the immersive experience that only QLED can offer. Whether you're binge-watching your favorite series, watching sports events, or gaming with friends, every moment will be elevated to new heights of visual excellence. With the combined power of VIDAA operating system and QLED, you can indulge in personalized recommendations tailored to your preferences. Discover new content that matches your taste, and witness every detail of your favorite shows and movies with astonishing clarity and realism.

VIDAA

T R U
RESOLUTION

T R U
MICRO DIMMING

H D R 1 0



*Google Smart Home Service and Works with Alexa may not be applicable in some models/countries/regions.

UV23 - UV33 Series: UHD VIDAA TV



VIDAA

T R U
RESOLUTION

T R U
MICRO DIMMING

H D R 1 0

Dolby Audio

works with
Google Home

dts HD

works with
alexa

NETFLIX

YouTube

prime video

Disney+

Introducing the new UHD VIDAA series, a groundbreaking leap in entertainment technology. Our VR revolutionizes the way you interact with your TV, bringing you a seamless and immersive viewing experience like never before. With its sleek interface and user-friendly design, navigating through channels, streaming services, and apps has never been easier.

Discover a world of limitless possibilities with our advanced features. Enjoy personalized recommendations tailored to your preferences, ensuring you never miss your favorite shows or movies. Dive into a vast library of on-demand content, from the latest blockbusters to classic favorites, all at your fingertips.



VIDAA

T R U
RESOLUTION

T R U
MICRO DIMMING

H D R 1 0

Dolby Audio

works with
Google Home

dts HD

works with
alexa

NETFLIX

YouTube

prime video

Disney+

*Google Smart Home Service and Works with Alexa may not be applicable in some models/countries/regions.

QV15 Series: QLED UHD VIDAA TV



Step into the next generation of home entertainment with the Toshiba QV15 Series. Featuring advanced QLED technology, this UHD TV delivers rich colors, enhanced brightness, and exceptional clarity—bringing every detail to life in stunning 4K resolution. Its new OD40 cabinet design introduces a refined and contemporary look, while the elegant side stands add a minimalist touch that fits seamlessly into any modern space. More than just a display, it's a statement of style.

Powered by the user-friendly VIDAA OS, you get fast access to streaming apps, live channels, and more—making it effortless to enjoy the content you love.

Toshiba QV15 Series: A vibrant blend of color, clarity, and cutting-edge design.

VIDAA

VIDAA VOICE

H D R 1 0

QLED

works with Google Home

works with alexa

YouTube

prime video

NETFLIX

Disney+

UV15 Series: DLED UHD VIDAA TV



Discover a new level of everyday viewing with the Toshiba DLED UHD TV—where performance meets modern design. Powered by DLED panel technology, it offers crisp 4K resolution, vivid colors, and balanced brightness for clear and comfortable viewing in any setting.

The all-new OD40 cabinet design brings a fresh, streamlined aesthetic to your living space. With slim bezels and elegant side stands, it blends perfectly into contemporary interiors, offering both visual harmony and practical stability.

Running on the intuitive VIDAA OS, this TV gives you instant access to popular streaming services and live content, all at your fingertips.

Toshiba UV15 Series: Designed for modern living, built for everyday performance.

VIDAA

VIDAA VOICE

H D R 1 0



W/LV2F – W/LV3F Series : HD/Full HD - VIDAA TV



VIDAA

HDR10

TRU
RESOLUTION

Bluetooth®

WLAN BUILT-IN

works with
Google Home

dts
HD

works
with alexa

NETFLIX

YouTube

prime video

Disney+

Introducing the Toshiba W/LV2F and W/LV3F series, featuring mechanically borderless designs that enhance the viewing experience by minimizing distractions. These TVs offer a choice of side and mid stand options for versatile placement to suit your preferences and room layout.

With HD or FHD resolution options, the W/LV2F and W/LV3F series deliver crisp, clear visuals with vibrant colors, ensuring an immersive viewing experience. The mechanically borderless design seamlessly blends the screen with the surrounding environment, further enhancing your viewing pleasure. Explore a variety of streaming services and apps easily with the VIDAA OS, making the most of your entertainment time.



VIDAA

HDR10

TRU
RESOLUTION

Bluetooth®

WLAN BUILT-IN

works with
Google Home

dts
HD

works
with alexa

NETFLIX

YouTube

prime video

Disney+

W/LV25- W/LV35 Series: HD/Full HD - VIDAA TV



VIDAA

HDR10

TRU
RESOLUTION

Bluetooth®

WLAN BUILT-IN

works with
Google Home

dts HD

works with
alexa

NETFLIX

YouTube

prime video

Disney+

Introducing the Toshiba W/LV24 and W/LV34 Series, offering both HD and Full HD options for crystal-clear viewing. These TVs come with the convenience of both side and mid stand options, allowing you to choose the placement that best suits your space and style. Enjoy seamless navigation and access to a wide range of content with the user-friendly VIDAA TV.



VIDAA

HDR10

TRU
RESOLUTION

Bluetooth®

WLAN BUILT-IN

works with
Google Home

dts HD

works with
alexa

NETFLIX

YouTube

prime video

Disney+





Introducing the Toshiba XF9F series, a groundbreaking lineup featuring Fire TV for seamless integration with your favorite apps and content. These TVs boast OLED technology for stunning picture quality, bringing colors to life with incredible clarity and contrast.

The XF9F series is ultra-thin, adding a touch of elegance to any room. With a 100 Hz mainboard, enjoy smooth motion for fast-paced scenes and sports. Experience extreme performance with the XF9F series, delivering an unparalleled viewing experience. With Press and Talk Alexa, control your TV and smart home devices effortlessly using just your voice. Enjoy the convenience of hands-free control, making your entertainment experience even more enjoyable.



OLED TV



100 Hz
REFRESH RATE

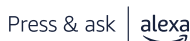


Press & ask | alexa





Enjoy seamless integration of content and intuitive navigation with the Toshiba UF4F series UHD Fire TV. Powered by Amazon's Fire TV operating system, this television brings a world of entertainment at your fingertips. Its slim DLED frameless mechanical design not only enhances the viewing experience with deeper contrasts and vibrant colors but also complements modern living spaces with its minimalist aesthetic. Navigate effortlessly through a vast array of streaming services, apps, and channels with the intuitive Fire TV operating system on the Toshiba UF4F series UHD Fire TV. Experience the convenience of voice control with Alexa, integrated directly into the Toshiba UF4F series UHD Fire TV, allowing you to search for content, control smart home devices, and more, all with just your voice. Stay up-to-date with the latest movies, TV shows, and news thanks to continuous software updates delivered by the Fire TV operating system on your Toshiba UF4F series UHD Fire TV



W/L2F- W/LF3F Series: HD/Full HD - Fire TV



Press & ask | alexa



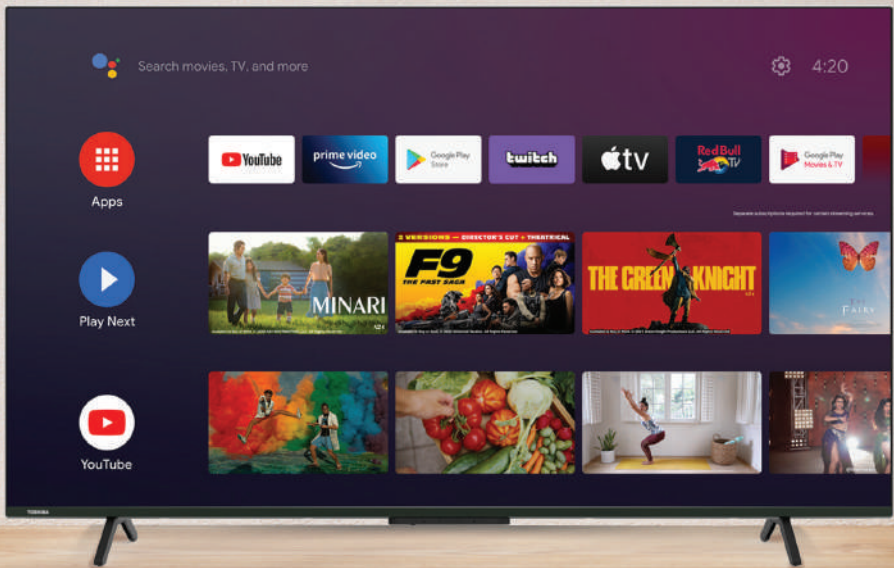
Introducing the Toshiba W/LF2F and W/LF3F series, featuring Fire TV for seamless access to your favorite apps and content. These series offer both HD and Full HD technology, delivering crisp and clear visuals for an enhanced viewing experience. With options for both side and mid stands, you can choose the placement that best suits your space and style. The W/LF2F and W/LF3F series provide versatile and stylish solutions for any room, ensuring you can enjoy your entertainment with ease and flexibility.



Press & ask | alexa



Android TV / Google TV



MG8F Series: MINILED UHD GOOGLE TV



Introducing the Toshiba MG8F series, featuring advanced MiniLED technology and Google TV for an unparalleled viewing experience. With 4K UHD resolution, the MG8F series delivers stunning clarity and detail, bringing your favorite content to life. Enjoy the brilliance of Ultra Bright display technology, which enhances brightness and contrast for vivid and lifelike visuals. The MG8F series combines cutting-edge technology with sleek design, making it the perfect addition to any modern home. With Google TV, easily access a vast library of movies, shows, and apps, all in one place. Use voice commands with the built-in Google Assistant to search for content, control your smart home devices, and get personalized recommendations based on your viewing habits. The MG8F series with Google TV offers a seamless and intelligent entertainment experience.



QA2 - QA3 Series: QLED UHD Android TV



androidtv QLED 4K HDR™ IMMERSE TRU PICTURE ENGINE Dolby Vision · Atmos POWERED BY ONKYO

Chromecast built-in Hey Google NETFLIX YouTube prime video Disney+ dts X

QLED TV, an innovative quantum-dot television, represents a new generation of LED-backlit LCD TVs. This technology utilizes blue LED light to drive the blue hues of the picture, while the quantum dots generate the red and green light, resulting in a perfect amalgamation that produces the desired color accuracy. In addition to its visually appealing borderless design, this TV incorporates the advantages of the Android platform, including convenient features like built-in Chromecast and Google Assistant. By taking advantage of the built-in apps such as Google Play, Disney+, Netflix, YouTube, and Prime Video, viewers can access an extensive library of movies, shows, and games. Moreover, the TV is equipped with Dolby Vision, a leading HDR technology, and boasts an impressive audio performance powered by Onkyo, achieving a remarkable fusion of exceptional picture and sound quality.



androidtv QLED TRU RESOLUTION TRU MICRO DIMMING Dolby Vision · Atmos

POWERED BY ONKYO Chromecast built-in Hey Google NETFLIX YouTube prime video Disney+

UA23 - UA3E Series: Slim Bezel Android TV



With its sleek and attractive borderless design, this QLED TV not only enhances your viewing experience but also offers the numerous advantages of Android, including built-in Chromecast and Google Assistant functionality. Immerse yourself in a vast array of entertainment options with access to thousands of movies, shows, and games through Google Play, Disney+, Netflix, YouTube, and Prime Video, all readily available. Thanks to notable advancements in picture quality, such as enhanced contrast and a refined, smoother image, you can expect a truly immersive visual experience. Moreover, this TV supports leading HDR technology, including Dolby Vision, while the audio is powered by Onkyo, resulting in a remarkable combination of exceptional picture and sound quality.



W/LA2 - W/LA3 Series: Full HD Android TV

LA2E



LA3E



androidtv



Dolby Audio



Experience a vast selection of movies, shows, and games through the New borderless design HD/FHD Android TV, which offers seamless access to popular streaming platforms including Google Play, Disney+, Netflix, YouTube, and Prime Video. Additionally, with the convenience of built-in Chromecast, effortlessly cast movies, shows, and photos from all your family's devices onto the TV screen. The inclusion of HDR10 technology ensures improved contrast and a more refined image, enhancing the visual quality in Full HD resolution. Furthermore, the TV is equipped with Android TV and Google Voice Assistant support, providing a user-friendly and voice-controlled interface for easy navigation and interaction.

LA23



androidtv



Dolby Audio



NOTES: _____

TOSHIBA

Follow us

@toshibatveurope

